

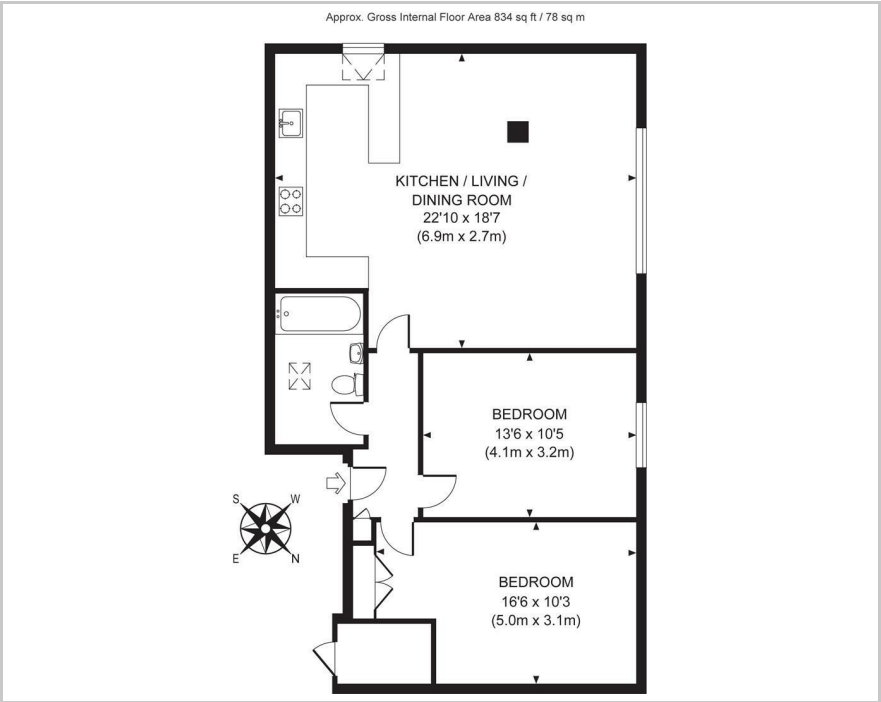


20 Abigail House Hazelgrove Road, Haywards Heath, RH16 3UR

£1,300 PCM



Floor Plan



Area Map



These particulars, whilst believed to be accurate are set out as a general outline only for guidance and do not constitute any part of an offer or contract. Intending purchasers should not rely on them as statements of representation of fact, but must satisfy themselves by inspection or otherwise as to their accuracy. No person in this firm's employment has the authority to make or give any representation or warranty in respect of the property.

Accommodation

A very spacious and lightly furnished, two double bedroom top floor flat situated close to the town centre and is in easy walking distance to the mainline railway station.

Available from Early/Mid September 2025 with long term lets preferred.

- Spacious accommodation
- Gas Central Heating
- Allocated parking space
- Close to town centre
- Easy walking distance to station
- Modern Kitchen with Appliances
- Two Double Bedrooms
- PART FURNISHED
- EPC 'C'

Viewing

Please contact us on 01444 455221 if you wish to arrange a viewing appointment for this property or require further information.

Energy Efficiency Graph

